



BLACK BEAR
TRANSMISSION

1501 McKinney Street
Suite 800
Houston, TX 77010
Website: blackbearllc.com

WHO IS BLACK BEAR TRANSMISSION

Black Bear Transmission LLC transports and delivers natural gas from various pipeline receipt points to power generation, industrial and utility customers in the Southeast United States. The company includes 12 regulated natural gas pipelines stretching more than 2,300 miles with total delivery capacity of more than 2.6 Bcf/d. The pipelines are connected to 18 major long-haul pipelines ensuring reliable gas supply to customers across Alabama, Arkansas, Louisiana, Mississippi, Missouri, Oklahoma and Tennessee. Black Bear Transmission is headquartered in Houston, TX.

PIPELINE SAFETY

System failures occur infrequently along the nation's network of interstate natural gas pipeline facilities, and many of these are caused by damage from others digging near the pipeline. We watch for unauthorized digging, but we request your help to notify us.

ALWAYS CALL 811 BEFORE YOU DIG!

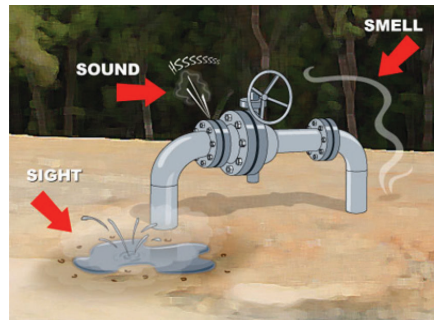


MAINTAINING SAFETY AND INTEGRITY OF PIPELINES

Our pipelines are monitored through a combination of systems and safety programs, including inspections on foot, and evaluation by state officials to ensure that operators are meeting regulatory requirements and making necessary repairs. Black Bear Transmission, LLC is committed to the safety of the public and care of the environment. We take great pains to follow the highest industry standards in order to provide top-quality services.

RECOGNIZING A PIPELINE

Line markers are placed at intervals along pipeline right-of-ways. Our markers give an approximate location of the pipeline system and display our telephone numbers. More specific inquiries about the location of our pipelines can be directed to Black Bear Transmission, LLC.



SIGNS OF A PIPELINE LEAK

Sight - Blowing gas, dead or dry vegetation, or bubbles in the water near the pipeline.

Sound - Whistling, hissing or roaring noise.

Smell - Odorized to smell like rotten eggs.

WHAT TO DO IF YOU SUSPECT A PIPELINE LEAK?

Your personal safety should be your first concern:

- Immediately leave the area. If possible, turn off any vehicles or equipment being used in or near the suspected leak. Abandon any equipment being used and move upwind from the suspected leak.

EMERGENCY CONTACT: 1-844-940-3077

PRODUCTS/DOT GUIDEBOOK ID#/GUIDE#:
Natural Gas 1971 115

LOUISIANA PARISHES OF OPERATION:

St. Bernard

Changes may occur. Contact the operator to discuss their pipeline systems and areas of operation.

- From a safe location, call Black Bear Transmission, LLC. Give your name, phone number, location, and a description of the leak.
- Warn others to stay away when possible.

WHAT NOT TO DO IF YOU SUSPECT A PIPELINE LEAK?

- **DO NOT** touch, breathe or make contact with the leaking gas. Stay upwind if possible.
- **DO NOT** light a match, start an engine, use a telephone, turn on/off any type of electrical switch or do anything that may create static or a spark.
- **DO NOT** attempt to extinguish any pipeline fire that may start.
- **DO NOT** drive into a leak or vapor cloud area. Automobile engines may ignite the vapors.
- **DO NOT** start or attempt to operate valves.

EMERGENCY RESPONSE PLANS

An Emergency Response Plan is developed for each pipeline facility to contain, control and mitigate the various types of emergency conditions/situations that could occur at one of our facilities. For more information regarding Black Bear Transmission emergency response plans and procedures, contact us directly.